

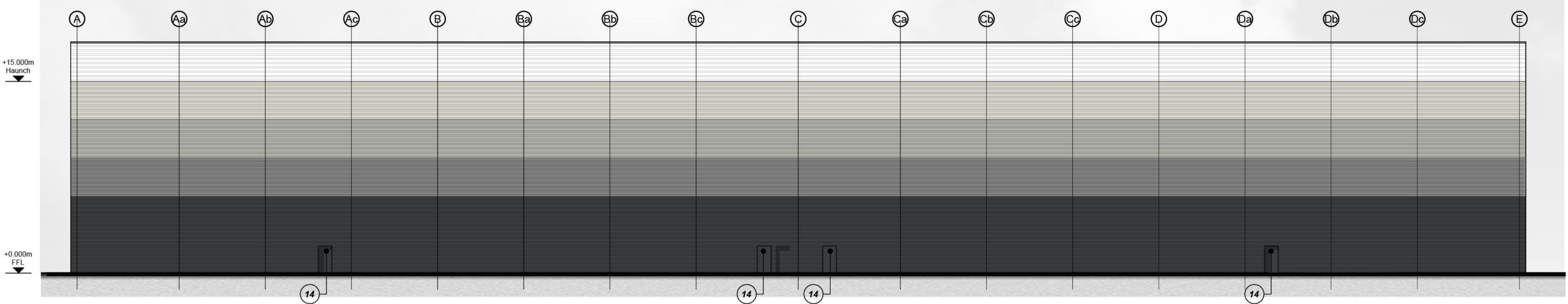
- Dimensions are in millimeters, unless stated otherwise.
 - Scaling of this drawing is not recommended.
 - It is the recipient's responsibility to print this document to the correct scale.
 - All relevant drawings and specifications should be read in conjunction with this drawing.

External Finishes

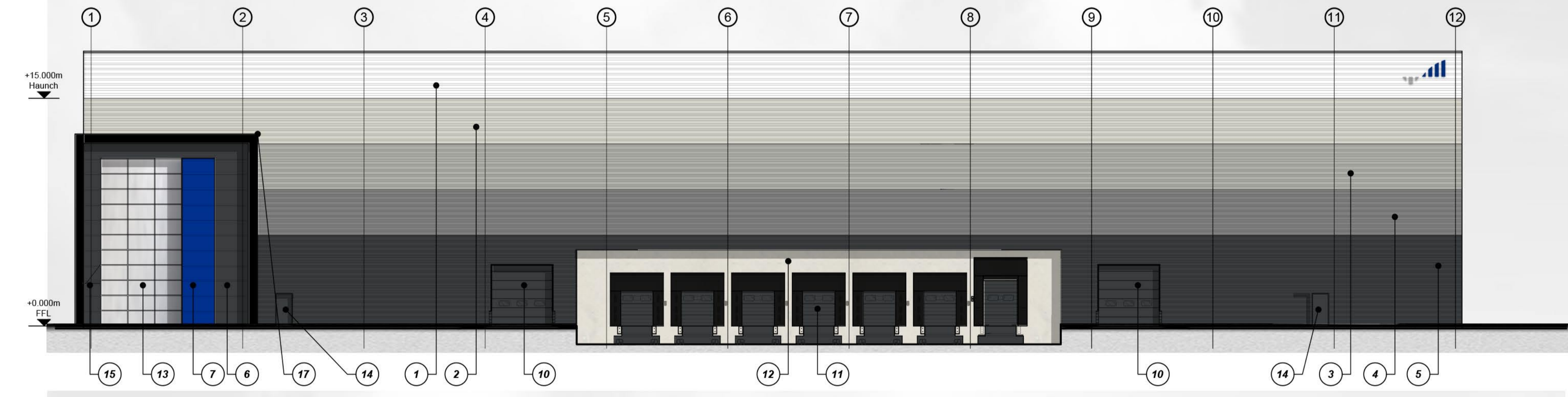
- 1 Horizontally laid trapezoidal built up cladding system
Finish: Tata Steel Colorcoat HPS200 Ultra
Colour: White (RAL 9003)
- 2 Horizontally laid trapezoidal built up cladding system
Finish: Tata Steel Colorcoat HPS200 Ultra
Colour: Hamlet (RAL 9002)
- 3 Horizontally laid trapezoidal built up cladding system
Finish: Tata Steel HPS200 Ultra
Colour: Goosewing Grey (RAL 7038)
- 4 Horizontally laid trapezoidal built up cladding system
Finish: Tata Steel Colorcoat HPS200 Ultra
Colour: Pure Grey (RAL 000 55 00)
- 5 Horizontally laid trapezoidal built up cladding system
Finish: Tata Steel Colorcoat HPS200 Ultra
Colour: Anthracite (RAL 7016)
- 6 Horizontally laid micro rib cladding panel
Finish: Tata Steel Prisma
Colour: Anthracite (RAL 7016)
- 7 Horizontally laid micro rib cladding panel feature wall
Finish: Tata Steel Prisma
Colour: Blue
- 8 Horizontally laid micro rib cladding panel
Finish: Tata Steel Prisma
Colour: Sirius Silver
- 9 Horizontally laid micro rib cladding panel
Finish: Tata Steel Prisma
Colour: Zeus Matt
- 10 Overhead sectional door with level access
Finish: Polyester powder coated
Colour: Anthracite (RAL 7016)
- 11 Teledock dock levellers with sectional overhead doors
with dock door access
Colour: Anthracite (RAL 7016)
- 12 Precast concrete pro-wall
- 13 Thermally broken aluminium curtain wall/window
system with spandrel panel to 4th face.
Finish: Polyester powder coated
Colour: Anthracite (RAL 7016)
- 14 Steel insulated security door & frame
Finish: Polyester powder coated
Colour: to match adjacent cladding colour
- 15 Canopy projecting 1.2m from curtain walling system
supported from tie rods with toughened (glazed) sheets
Finish: Polyester powder coated
Colour: Anthracite (RAL 7016)
- 16 Aluminum Glazed door
Colour: Anthracite (RAL 7016)
- 17 Projecting 3.0mm aluminum office feature frame /
porfico.
Colour: Black



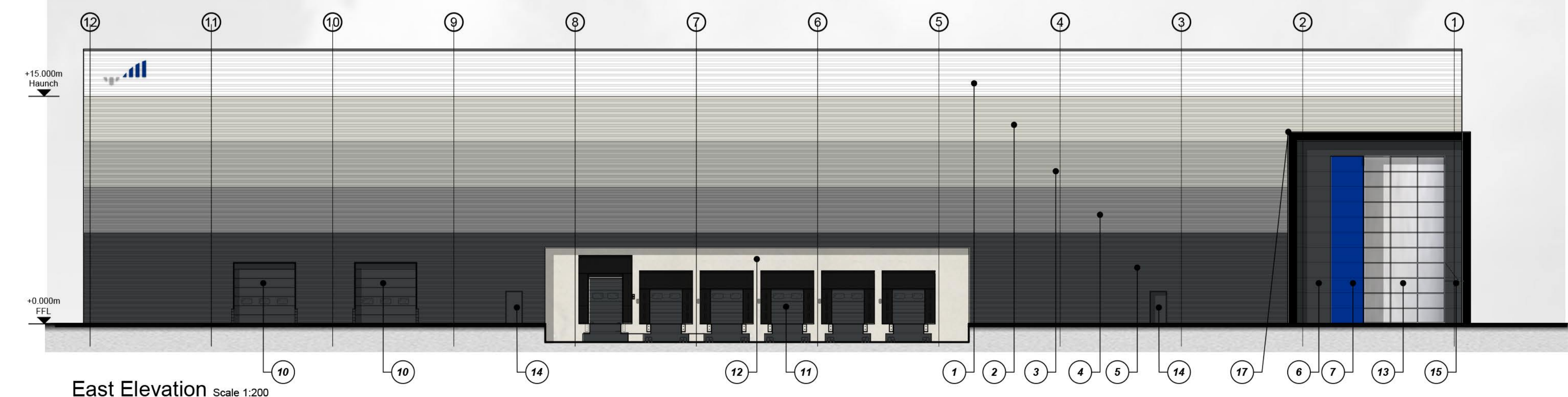
North Elevation Scale 1:200



South Elevation Scale 1:200



West Elevation Scale 1:200



East Elevation Scale 1:200



P3	Drawing revised to suit client comments received 09.08.22	AMQ	MT	10.08.22
P2	Drawing revised to suit client comments received 02.08.22	LAH	MT	04.08.22
P1	Initial Issue	LAH	MT	16.06.22
rev	amendments	by	ckd	date

Selinas Lane, Dagenham

Unit 100 200 - Proposed Elevations



RIBA PoW Stage:	2 - Concept Design
Document Suitability:	06
Drawn / Checked:	LAH / MT
Date:	16.06.22
Scale:	1:200 A1
UMC Project Number:	21422
Document Reference:	Drawing no: Revision:
21422 - UMC - 0100 - EL - DR - A	1301 P3

PLANNING
 THIS DRAWING IS TO BE USED FOR THE STATED PURPOSE ONLY AND SHOULD NOT BE USED FOR ANY OTHER